

Power Supply Procurement Plan 2024



**BOHOL II ELECTRIC COOPERATIVE, INC.
[BOHECO II]**

MAOMAWAN ISLAND

Historical Consumption Data

Bohol II Electric Cooperative, Inc. (BOHECO II) and National Power Corporation (NPC) had an existing supply contract with a term from 26 March 2021 to 25 December 2023 to supply Cabulan Island. With existing distribution lines, Maomawan Island with six (6) other new areas were included in the existing contract through Board Resolution No. 87 Series of 2022 titled: "*A Resolution requesting for the inclusion of seven (7) new areas to the existing PSA between NPC and BOHECO II*", with effectiveness term of 26 June 2022 to 25 December 2023.

Maomawan Island is constantly applied for BLEP for subsidized projects and was approved funding from the 2017-2021 Subsidy Savings on the third quarter of 2023. With the conclusion of the bidding for the project last October 2023, the construction of distribution lines is targeted to be completed in the last quarter of 2024 or earlier upon release of funds from National Electrification Administration (NEA).

Diesel generators are already available on the Island pending issuance of the Certificate of Compliance from the Energy Regulatory Commission (ERC).

The contract with NPC underwent renewal, now extending over a ten-year term from December 26, 2023, to December 25, 2033. Notably, this renewal was executed without the inclusion of the energization component for the island.

Forecasted Consumption Data

		Coincident Peak MW	Contracted MW	Pending MW	Planned MW	Retail Electricity Suppliers MW	Existing Contracting Level	Target Contracting Level	MW Surplus / Deficit
2024	Oct	0.047	0.048	0.000	0.000		102%	102%	0.001
	Nov	0.049	0.049	0.000	0.000		100%	100%	0.000
	Dec	0.046	0.046	0.000	0.000		100%	100%	0.000
2025	Jan	0.047	0.048	0.000	0.000		102%	102%	0.001
	Feb	0.045	0.046	0.000	0.000		102%	102%	0.001
	Mar	0.048	0.049	0.000	0.000		102%	102%	0.001
	Apr	0.050	0.051	0.000	0.000		102%	102%	0.001
	May	0.051	0.052	0.000	0.000		102%	102%	0.001
	Jun	0.055	0.056	0.000	0.000		102%	102%	0.001
	Jul	0.049	0.049	0.000	0.000		100%	100%	0.000
	Aug	0.049	0.050	0.000	0.000		102%	102%	0.001
	Sep	0.049	0.050	0.000	0.000		102%	102%	0.001
	Oct	0.049	0.050	0.000	0.000		102%	102%	0.001
	Nov	0.050	0.051	0.000	0.000		102%	102%	0.001
	Dec	0.047	0.048	0.000	0.000		102%	102%	0.001
2026	Jan	0.049	0.050	0.000	0.000		102%	102%	0.001
	Feb	0.046	0.047	0.000	0.000		102%	102%	0.001
	Mar	0.050	0.051	0.000	0.000		102%	102%	0.001
	Apr	0.052	0.053	0.000	0.000		102%	102%	0.001
	May	0.053	0.054	0.000	0.000		102%	102%	0.001
	Jun	0.057	0.058	0.000	0.000		102%	102%	0.001
	Jul	0.050	0.051	0.000	0.000		102%	102%	0.001
	Aug	0.051	0.052	0.000	0.000		102%	102%	0.001
	Sep	0.050	0.051	0.000	0.000		102%	102%	0.001
	Oct	0.051	0.052	0.000	0.000		102%	102%	0.001
	Nov	0.052	0.053	0.000	0.000		102%	102%	0.001
	Dec	0.049	0.050	0.000	0.000		102%	102%	0.001
2027	Jan	0.050	0.052	0.000	0.000		104%	104%	0.002
	Feb	0.047	0.049	0.000	0.000		104%	104%	0.002

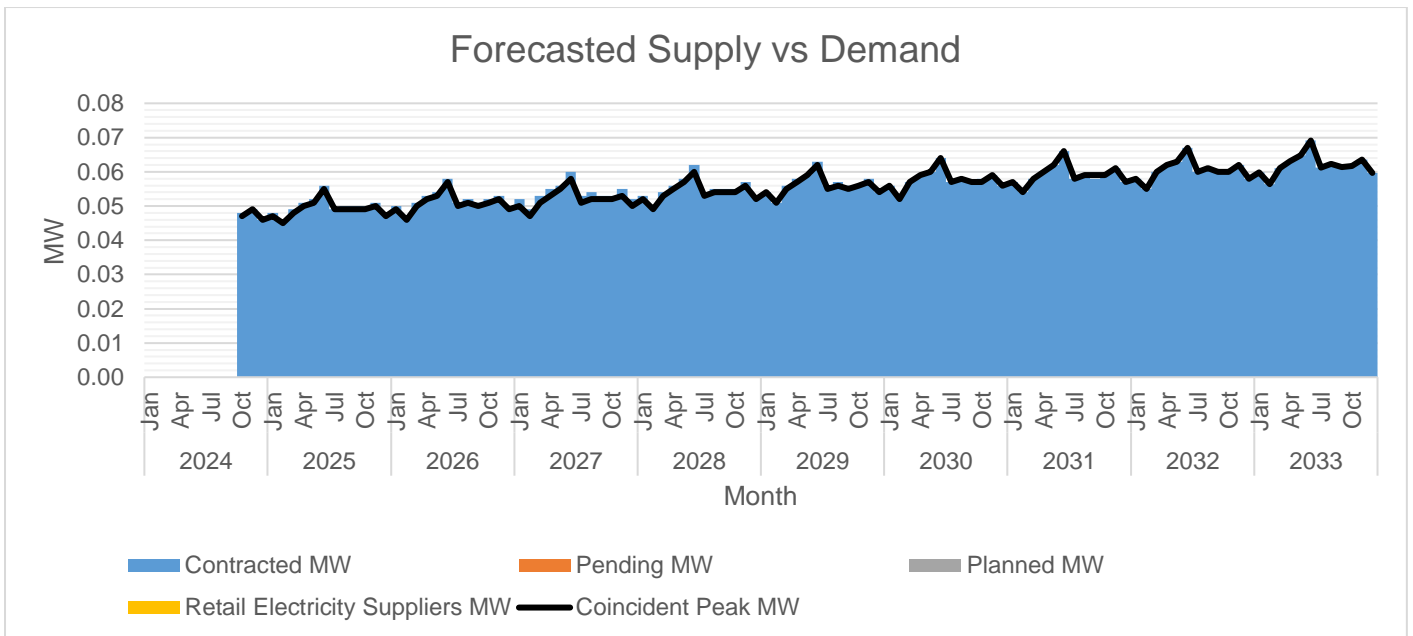
	Mar	0.051	0.053	0.000	0.000		104%	104%	0.002
	Apr	0.053	0.055	0.000	0.000		104%	104%	0.002
	May	0.055	0.056	0.000	0.000		102%	102%	0.001
	Jun	0.058	0.060	0.000	0.000		103%	103%	0.002
	Jul	0.051	0.053	0.000	0.000		104%	104%	0.002
	Aug	0.052	0.054	0.000	0.000		104%	104%	0.002
	Sep	0.052	0.053	0.000	0.000		102%	102%	0.001
	Oct	0.052	0.053	0.000	0.000		102%	102%	0.001
	Nov	0.053	0.055	0.000	0.000		104%	104%	0.002
	Dec	0.050	0.052	0.000	0.000		104%	104%	0.002
2028	Jan	0.052	0.053	0.000	0.000		102%	102%	0.001
	Feb	0.049	0.050	0.000	0.000		102%	102%	0.001
	Mar	0.053	0.054	0.000	0.000		102%	102%	0.001
	Apr	0.055	0.056	0.000	0.000		102%	102%	0.001
	May	0.057	0.058	0.000	0.000		102%	102%	0.001
	Jun	0.060	0.062	0.000	0.000		103%	103%	0.002
	Jul	0.053	0.054	0.000	0.000		102%	102%	0.001
	Aug	0.054	0.055	0.000	0.000		102%	102%	0.001
	Sep	0.054	0.055	0.000	0.000		102%	102%	0.001
	Oct	0.054	0.055	0.000	0.000		102%	102%	0.001
	Nov	0.056	0.057	0.000	0.000		102%	102%	0.001
	Dec	0.052	0.053	0.000	0.000		102%	102%	0.001
2029	Jan	0.054	0.054	0.000	0.000		100%	100%	0.000
	Feb	0.051	0.051	0.000	0.000		100%	100%	0.000
	Mar	0.055	0.056	0.000	0.000		102%	102%	0.001
	Apr	0.057	0.058	0.000	0.000		102%	102%	0.001
	May	0.059	0.059	0.000	0.000		100%	100%	0.000
	Jun	0.062	0.063	0.000	0.000		102%	102%	0.001
	Jul	0.055	0.056	0.000	0.000		102%	102%	0.001
	Aug	0.056	0.057	0.000	0.000		102%	102%	0.001
	Sep	0.055	0.056	0.000	0.000		102%	102%	0.001
	Oct	0.056	0.056	0.000	0.000		100%	100%	0.000
	Nov	0.057	0.058	0.000	0.000		102%	102%	0.001
	Dec	0.054	0.054	0.000	0.000		100%	100%	0.000

2030	Jan	0.056	0.056	0.000	0.000		100%	100%	0.000
	Feb	0.052	0.053	0.000	0.000		102%	102%	0.001
	Mar	0.057	0.057	0.000	0.000		100%	100%	0.000
	Apr	0.059	0.059	0.000	0.000		100%	100%	0.000
	May	0.060	0.060	0.000	0.000		100%	100%	0.000
	Jun	0.064	0.064	0.000	0.000		100%	100%	0.000
	Jul	0.057	0.057	0.000	0.000		100%	100%	0.000
	Aug	0.058	0.058	0.000	0.000		100%	100%	0.000
	Sep	0.057	0.057	0.000	0.000		100%	100%	0.000
	Oct	0.057	0.058	0.000	0.000		102%	102%	0.001
	Nov	0.059	0.059	0.000	0.000		100%	100%	0.000
	Dec	0.056	0.056	0.000	0.000		100%	100%	0.000
2031	Jan	0.057	0.057	0.000	0.000		100%	100%	0.000
	Feb	0.054	0.054	0.000	0.000		100%	100%	0.000
	Mar	0.058	0.058	0.000	0.000		100%	100%	0.000
	Apr	0.060	0.060	0.000	0.000		100%	100%	0.000
	May	0.062	0.062	0.000	0.000		100%	100%	0.000
	Jun	0.066	0.066	0.000	0.000		100%	100%	0.000
	Jul	0.058	0.058	0.000	0.000		100%	100%	0.000
	Aug	0.059	0.059	0.000	0.000		100%	100%	0.000
	Sep	0.059	0.058	0.000	0.000		98%	98%	-0.001
	Oct	0.059	0.059	0.000	0.000		100%	100%	0.000
	Nov	0.061	0.061	0.000	0.000		100%	100%	0.000
	Dec	0.057	0.057	0.000	0.000		100%	100%	0.000
2032	Jan	0.058	0.058	0.000	0.000		100%	100%	0.000
	Feb	0.055	0.055	0.000	0.000		100%	100%	0.000
	Mar	0.060	0.060	0.000	0.000		100%	100%	0.000
	Apr	0.062	0.062	0.000	0.000		100%	100%	0.000
	May	0.063	0.063	0.000	0.000		100%	100%	0.000
	Jun	0.067	0.067	0.000	0.000		100%	100%	0.000
	Jul	0.060	0.060	0.000	0.000		100%	100%	0.000
	Aug	0.061	0.061	0.000	0.000		100%	100%	0.000
	Sep	0.060	0.060	0.000	0.000		100%	100%	0.000
	Oct	0.060	0.060	0.000	0.000		100%	100%	0.000

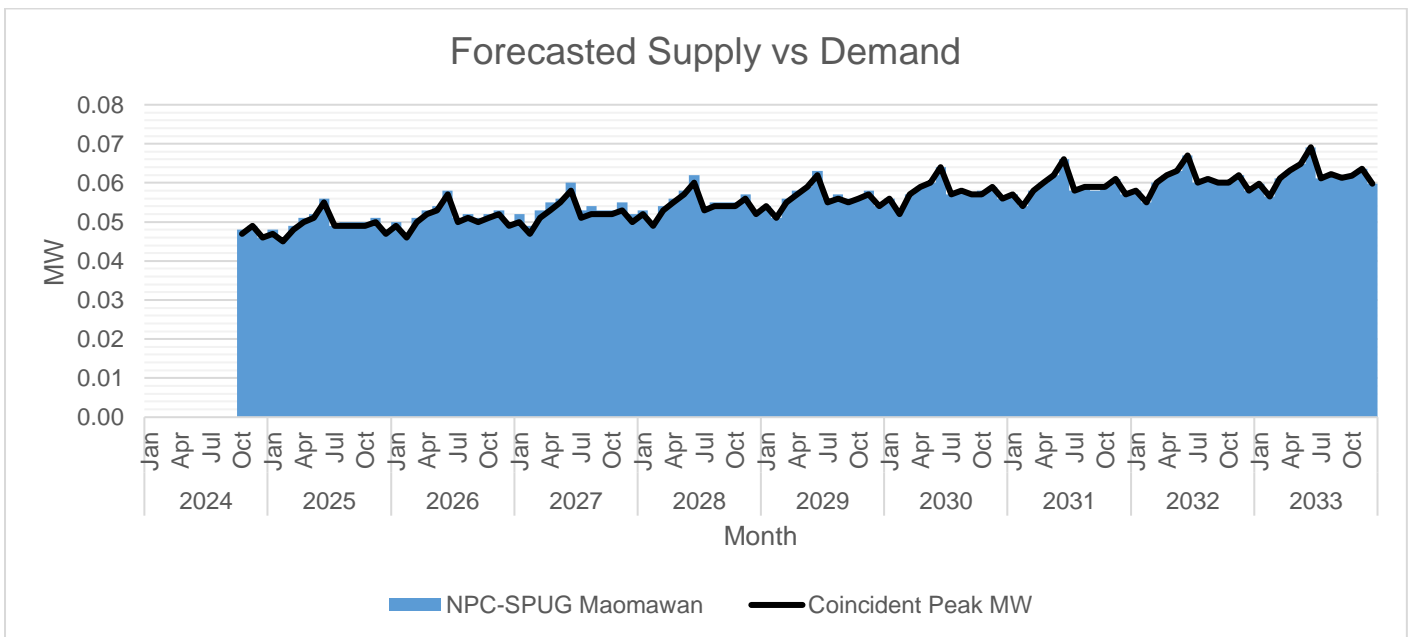
	Nov	0.062	0.062	0.000	0.000		100%	100%	0.000
	Dec	0.058	0.058	0.000	0.000		100%	100%	0.000
2033	Jan	0.060	0.060	0.000	0.000		100%	100%	0.000
	Feb	0.056	0.056	0.000	0.000		100%	100%	0.000
	Mar	0.061	0.061	0.000	0.000		100%	100%	0.000
	Apr	0.063	0.063	0.000	0.000		100%	100%	0.000
	May	0.065	0.065	0.000	0.000		100%	100%	0.000
	Jun	0.069	0.069	0.000	0.000		100%	100%	0.000
	Jul	0.061	0.061	0.000	0.000		100%	100%	0.000
	Aug	0.062	0.062	0.000	0.000		100%	100%	0.000
	Sep	0.061	0.061	0.000	0.000		100%	100%	0.000
	Oct	0.062	0.062	0.000	0.000		100%	100%	0.000
	Nov	0.064	0.064	0.000	0.000		100%	100%	0.000
	Dec	0.060	0.060	0.000	0.000		100%	100%	0.000

Forecasting of Peak Demand is determined by the quotient of forecasted energy and by the product of time (t) in year [8760 hours] and the system load factor. Furthermore, for the purpose of calculation, the system load factor was assumed to vary from 53% to 73% in the next succeeding period of forecasting based on its historical trend in the previous year.

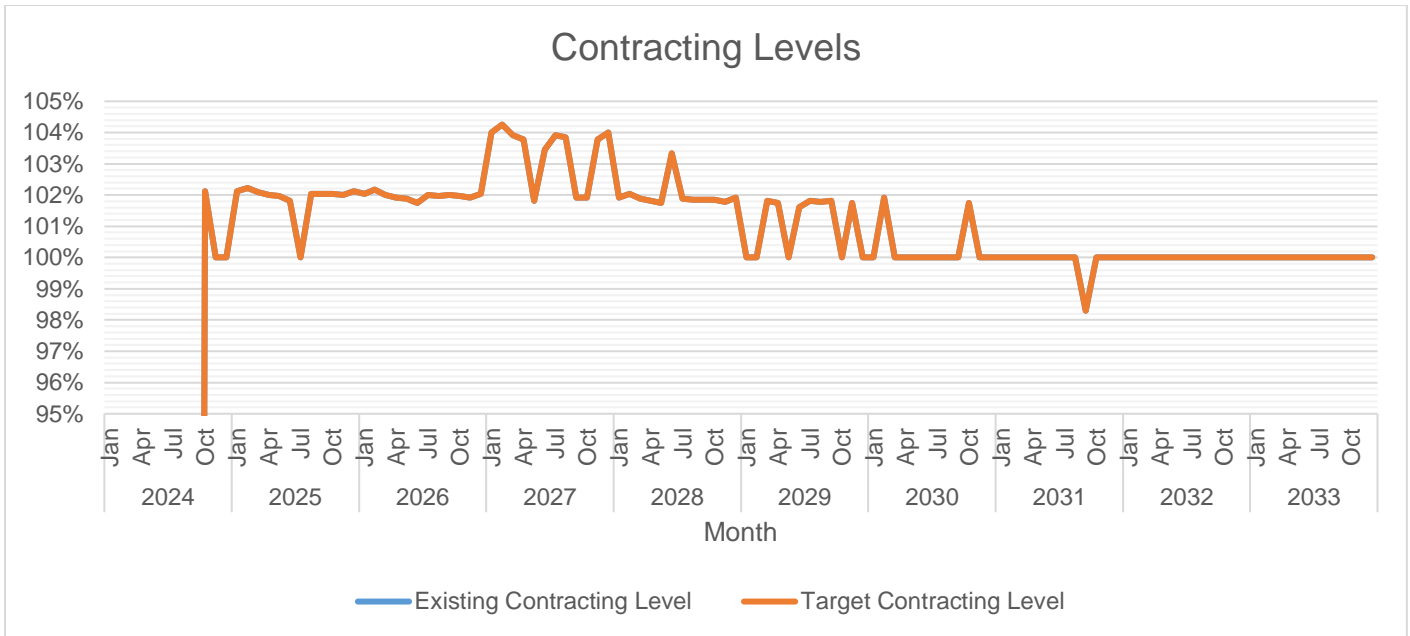
The Peak Demand was assumed to occur in the month of June. Monthly Peak Demand is at its lowest on the month of February. In general, Peak Demand is expected to grow at an average rate of 3% annually.



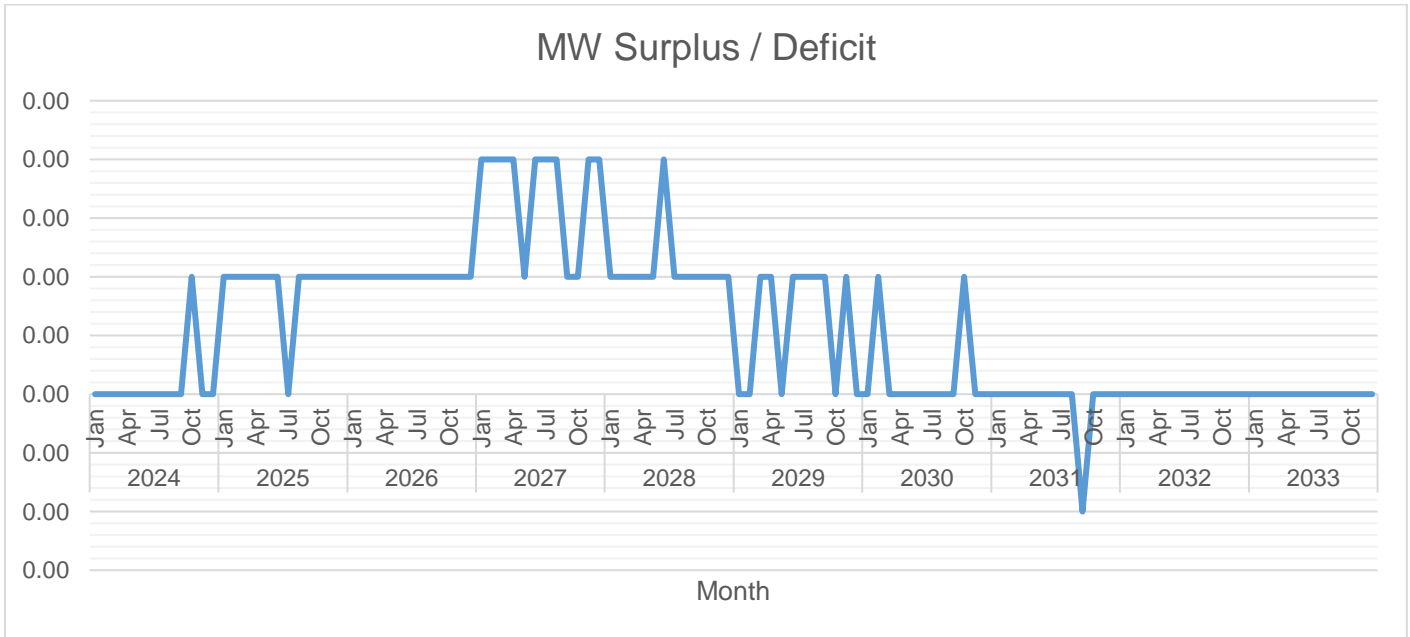
The available supply is generally above the Peak Demand. This is because the expected total capacity installed of the diesel generator is 0.050MW, higher than the Peak Demand.



The available supply that ranges from 0.044 MW to 0.069 MW will solely come from NPC's Maomawan Diesel Power Plant.



The highest target contracting level is 104% which is expected to occur in February 2027. The lowest target contracting level is 98% which is expected to occur in September 2031.



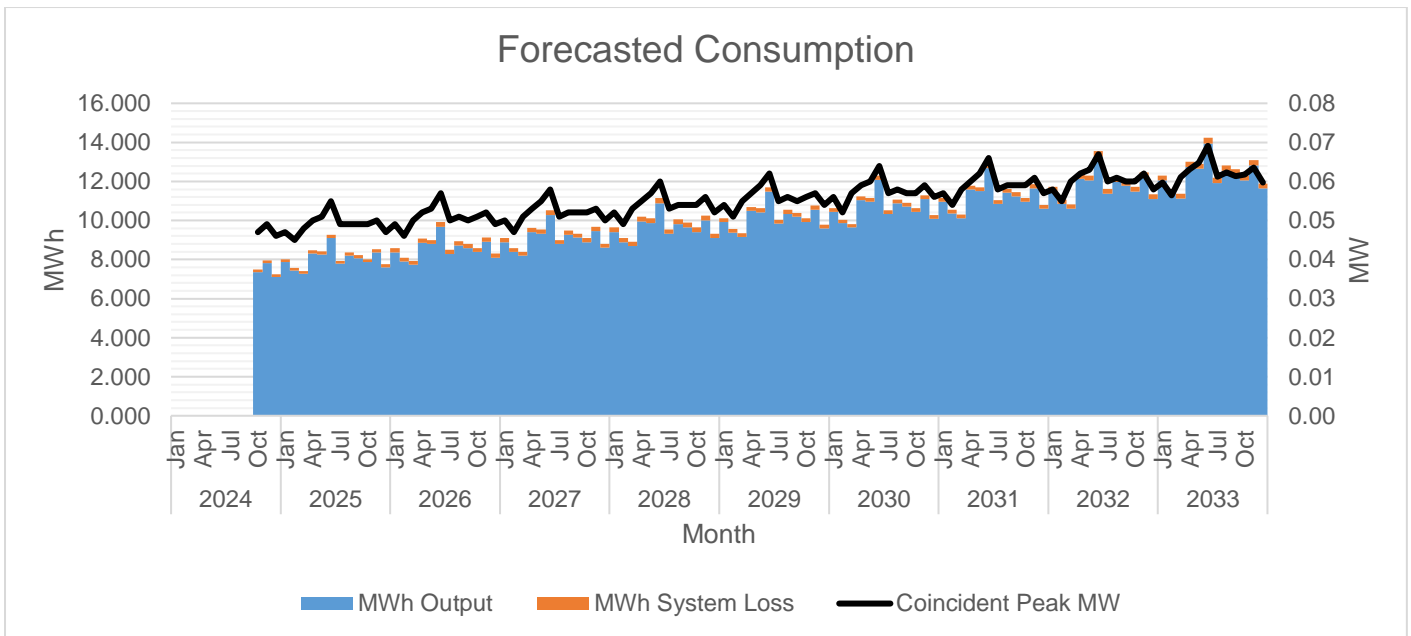
The highest surplus is 0.002 MW which is expected to occur in the month of February of 2027. The highest deficit is -0.001 MW which is expected to occur in the month of September of 2031.

		MWh Offtake	MWh Output	MWh System Loss	Transm'n Loss	System Loss
2024	Oct	7.494	7.347	0.148	0.00%	1.97%
	Nov	7.967	7.810	0.157	0.00%	1.97%
	Dec	7.246	7.103	0.143	0.00%	1.97%
2025	Jan	8.015	7.859	0.156	0.00%	1.95%
	Feb	7.573	7.425	0.147	0.00%	1.95%
	Mar	7.402	7.258	0.144	0.00%	1.95%
	Apr	8.473	8.308	0.165	0.00%	1.95%
	May	8.414	8.250	0.164	0.00%	1.95%
	Jun	9.273	9.092	0.181	0.00%	1.95%
	Jul	7.939	7.784	0.155	0.00%	1.95%
	Aug	8.355	8.192	0.163	0.00%	1.95%
	Sep	8.227	8.067	0.160	0.00%	1.95%
	Oct	8.019	7.863	0.156	0.00%	1.95%
	Nov	8.524	8.358	0.166	0.00%	1.95%
	Dec	7.753	7.602	0.151	0.00%	1.95%
2026	Jan	8.576	8.375	0.201	0.00%	2.35%
	Feb	8.103	7.912	0.190	0.00%	2.35%
	Mar	7.920	7.735	0.186	0.00%	2.35%
	Apr	9.066	8.853	0.213	0.00%	2.35%
	May	9.003	8.792	0.211	0.00%	2.35%
	Jun	9.922	9.689	0.233	0.00%	2.35%
	Jul	8.495	8.295	0.199	0.00%	2.35%
	Aug	8.940	8.730	0.210	0.00%	2.35%
	Sep	8.803	8.596	0.207	0.00%	2.35%
	Oct	8.580	8.379	0.201	0.00%	2.35%
	Nov	9.121	8.907	0.214	0.00%	2.35%
	Dec	8.296	8.101	0.195	0.00%	2.35%
2027	Jan	9.091	8.891	0.200	0.00%	2.20%
	Feb	8.589	8.400	0.189	0.00%	2.20%
	Mar	8.396	8.211	0.185	0.00%	2.20%
	Apr	9.610	9.398	0.211	0.00%	2.20%
	May	9.543	9.333	0.210	0.00%	2.20%
	Jun	10.517	10.286	0.231	0.00%	2.20%
	Jul	9.004	8.806	0.198	0.00%	2.20%
	Aug	9.476	9.268	0.208	0.00%	2.20%
	Sep	9.331	9.126	0.205	0.00%	2.20%
	Oct	9.095	8.895	0.200	0.00%	2.20%
	Nov	9.668	9.456	0.213	0.00%	2.20%
	Dec	8.794	8.601	0.193	0.00%	2.20%
2028	Jan	9.636	9.407	0.229	0.00%	2.38%
	Feb	9.104	8.887	0.217	0.00%	2.38%
	Mar	8.899	8.688	0.212	0.00%	2.38%
	Apr	10.186	9.944	0.243	0.00%	2.38%
	May	10.116	9.875	0.241	0.00%	2.38%
	Jun	11.148	10.883	0.265	0.00%	2.38%
	Jul	9.545	9.317	0.227	0.00%	2.38%
	Aug	10.045	9.806	0.239	0.00%	2.38%
	Sep	9.891	9.655	0.236	0.00%	2.38%

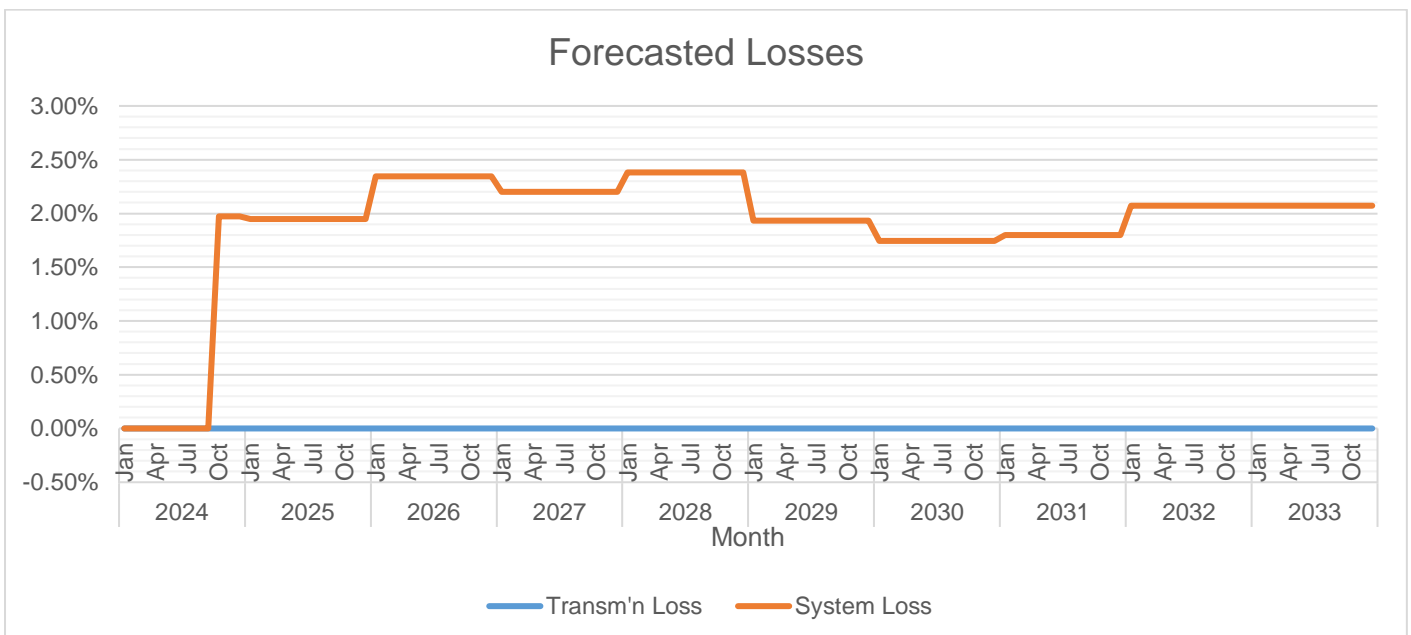
	Oct	9.641	9.411	0.230	0.00%	2.38%
	Nov	10.248	10.004	0.244	0.00%	2.38%
	Dec	9.322	9.100	0.222	0.00%	2.38%
2029	Jan	10.118	9.922	0.195	0.00%	1.93%
	Feb	9.559	9.375	0.185	0.00%	1.93%
	Mar	9.344	9.164	0.180	0.00%	1.93%
	Apr	10.696	10.489	0.207	0.00%	1.93%
	May	10.621	10.416	0.205	0.00%	1.93%
	Jun	11.705	11.479	0.226	0.00%	1.93%
	Jul	10.022	9.828	0.194	0.00%	1.93%
	Aug	10.547	10.343	0.204	0.00%	1.93%
	Sep	10.385	10.185	0.201	0.00%	1.93%
	Oct	10.123	9.927	0.196	0.00%	1.93%
	Nov	10.761	10.553	0.208	0.00%	1.93%
	Dec	9.788	9.599	0.189	0.00%	1.93%
2030	Jan	10.624	10.438	0.185	0.00%	1.75%
	Feb	10.037	9.862	0.175	0.00%	1.75%
	Mar	9.812	9.640	0.171	0.00%	1.75%
	Apr	11.230	11.034	0.196	0.00%	1.75%
	May	11.152	10.958	0.195	0.00%	1.75%
	Jun	12.291	12.076	0.215	0.00%	1.75%
	Jul	10.523	10.339	0.184	0.00%	1.75%
	Aug	11.075	10.881	0.193	0.00%	1.75%
	Sep	10.905	10.714	0.190	0.00%	1.75%
	Oct	10.629	10.443	0.186	0.00%	1.75%
	Nov	11.299	11.102	0.197	0.00%	1.75%
	Dec	10.277	10.098	0.179	0.00%	1.75%
2031	Jan	11.155	10.954	0.201	0.00%	1.80%
	Feb	10.539	10.349	0.190	0.00%	1.80%
	Mar	10.302	10.117	0.185	0.00%	1.80%
	Apr	11.792	11.580	0.212	0.00%	1.80%
	May	11.710	11.499	0.211	0.00%	1.80%
	Jun	12.905	12.673	0.232	0.00%	1.80%
	Jul	11.049	10.850	0.199	0.00%	1.80%
	Aug	11.628	11.419	0.209	0.00%	1.80%
	Sep	11.450	11.244	0.206	0.00%	1.80%
	Oct	11.160	10.960	0.201	0.00%	1.80%
	Nov	11.864	11.650	0.213	0.00%	1.80%
	Dec	10.791	10.597	0.194	0.00%	1.80%
2032	Jan	11.713	11.470	0.243	0.00%	2.07%
	Feb	11.066	10.837	0.229	0.00%	2.07%
	Mar	10.817	10.593	0.224	0.00%	2.07%
	Apr	12.382	12.125	0.256	0.00%	2.07%
	May	12.296	12.041	0.255	0.00%	2.07%
	Jun	13.551	13.270	0.281	0.00%	2.07%
	Jul	11.601	11.361	0.240	0.00%	2.07%
	Aug	12.210	11.957	0.253	0.00%	2.07%
	Sep	12.022	11.773	0.249	0.00%	2.07%
	Oct	11.718	11.476	0.243	0.00%	2.07%
	Nov	12.457	12.199	0.258	0.00%	2.07%
	Dec	11.330	11.096	0.235	0.00%	2.07%

2033	Jan	12.298	12.044	0.255	0.00%	2.07%
	Feb	11.619	11.379	0.241	0.00%	2.07%
	Mar	11.358	11.123	0.235	0.00%	2.07%
	Apr	13.001	12.731	0.269	0.00%	2.07%
	May	12.910	12.643	0.267	0.00%	2.07%
	Jun	14.228	13.933	0.295	0.00%	2.07%
	Jul	12.182	11.929	0.252	0.00%	2.07%
	Aug	12.820	12.555	0.266	0.00%	2.07%
	Sep	12.623	12.362	0.261	0.00%	2.07%
	Oct	12.304	12.049	0.255	0.00%	2.07%
	Nov	13.080	12.809	0.271	0.00%	2.07%
	Dec	11.897	11.651	0.246	0.00%	2.07%

MWh Offtake was forecasted using the average hourly consumption per consumer from the existing Cabul-an Island multiplied by the number of potential consumers and eight (8) hours of operational hours. For forecasting simulation, the growth rate used varies from 5% to 8%.



MWh Output was expected to grow at an average rate of 6% annually.



System Loss is expected to range from 1.75% to 2.38%.

It is important to note that there are currently no non-technical losses reflected in the submission. This is primarily because BOHECO II has yet to implement a system for segregating its off-grid system losses. Without this segregation, it becomes challenging to accurately identify and address areas of non-technical loss, such as theft, billing inaccuracies, and administrative inefficiencies.

Power Supply

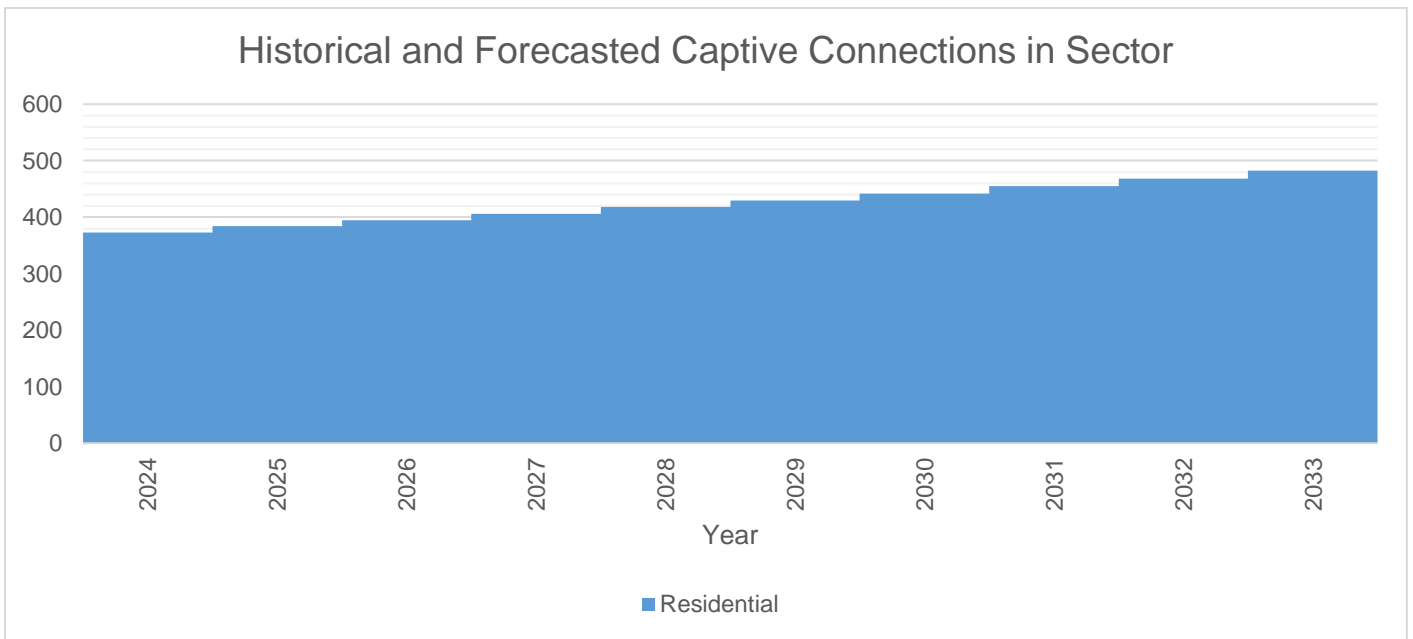
Case No.	Type	GenCo	Minimum MW	Minimum MWh/yr	PSA Start	PSA End
NPC-SPUG Maomawan	Base	National Power Corporation	0.044	91.558	12/26/2023	12/25/2033

The Power Supply Agreement on the Sale of Electricity with the National Power Corporation (NPC) is pursuant to Section 70 of Republic Act No. 9136 and Section 1.a and Section 3.a of Rule 13 of the Implementing Rules and Regulations (IRR) of Republic Act No. 9136, which provides that the Small Power Utilities Group (SPUG) of NPC is responsible for providing power generation and its associated power delivery systems in areas that are not connected to the transmission system.

Through BOHECO II Board Resolution No. 87 Series of 2022 titled: “*A Resolution requesting for the inclusion of seven (7) new areas to the existing PSA between NPC and BOHECO II*”, the Island of Maomawan, being one of the new seven areas, was granted supply contract effective 26 June 2022 to 25 December 2033. Construction of distribution lines are scheduled in the last quarter of 2024 or earlier upon release of funds from NEA.

The contract was then renewed for a ten-year period (December 26, 2023 – December 25, 2033) without the energization of the island.

Captive Customer Connections



The number of Residential connections is expected to grow at a rate of 3% annually. Said customer class accounts for 100% of the total consumption.